

# **SLOUGH MULTIFUEL EXTENSION PROJECT**

Planning Inspectorate Ref: EN010129

## **The Slough Multifuel Extension Order**

**Land at 342 Edinburgh Avenue, Slough Trading Estate, Slough**

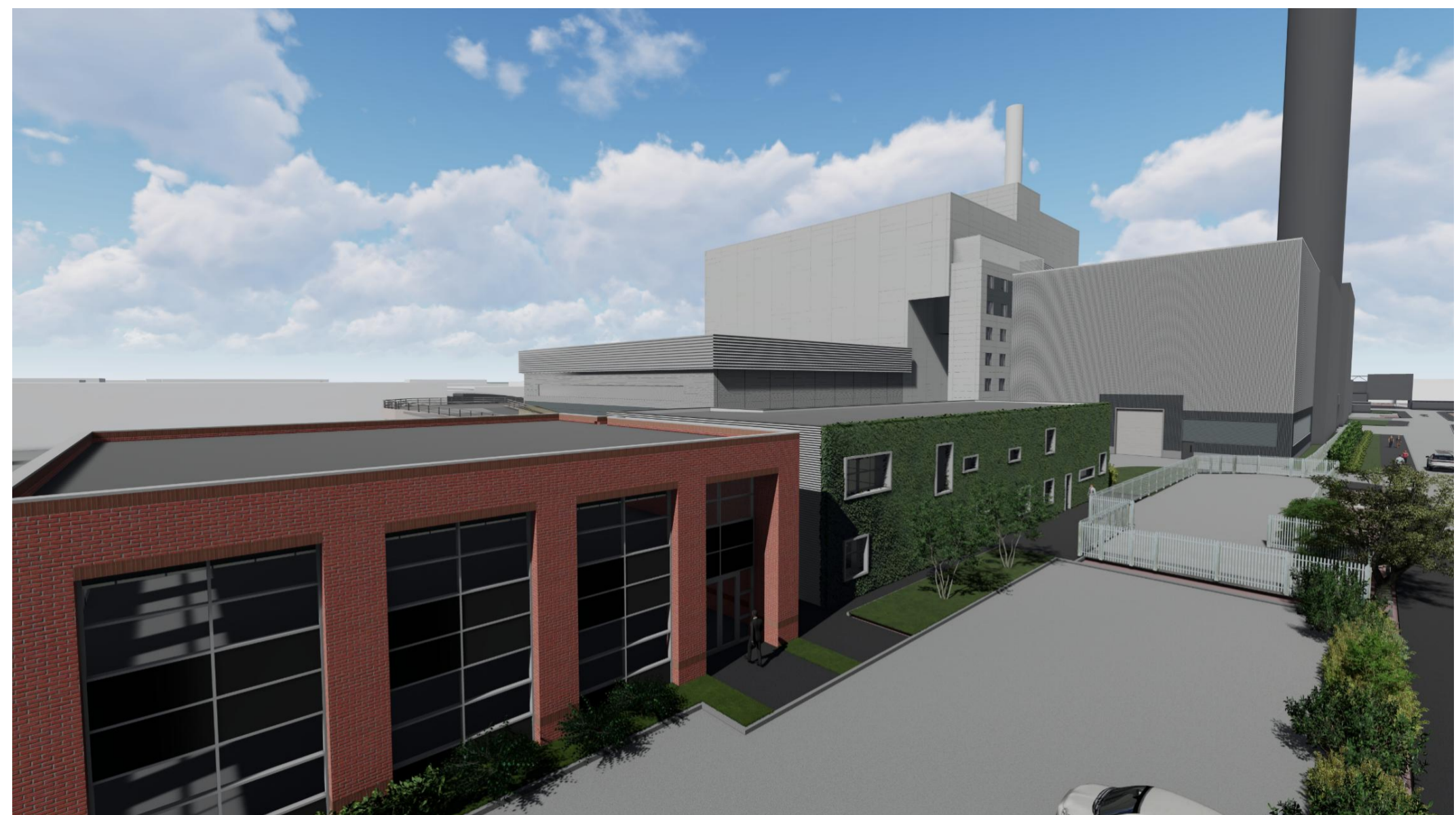
**Document Ref: 7.4.5 Condition 4 - Living Wall - Architectural  
Visualisation**

The Planning Act 2008

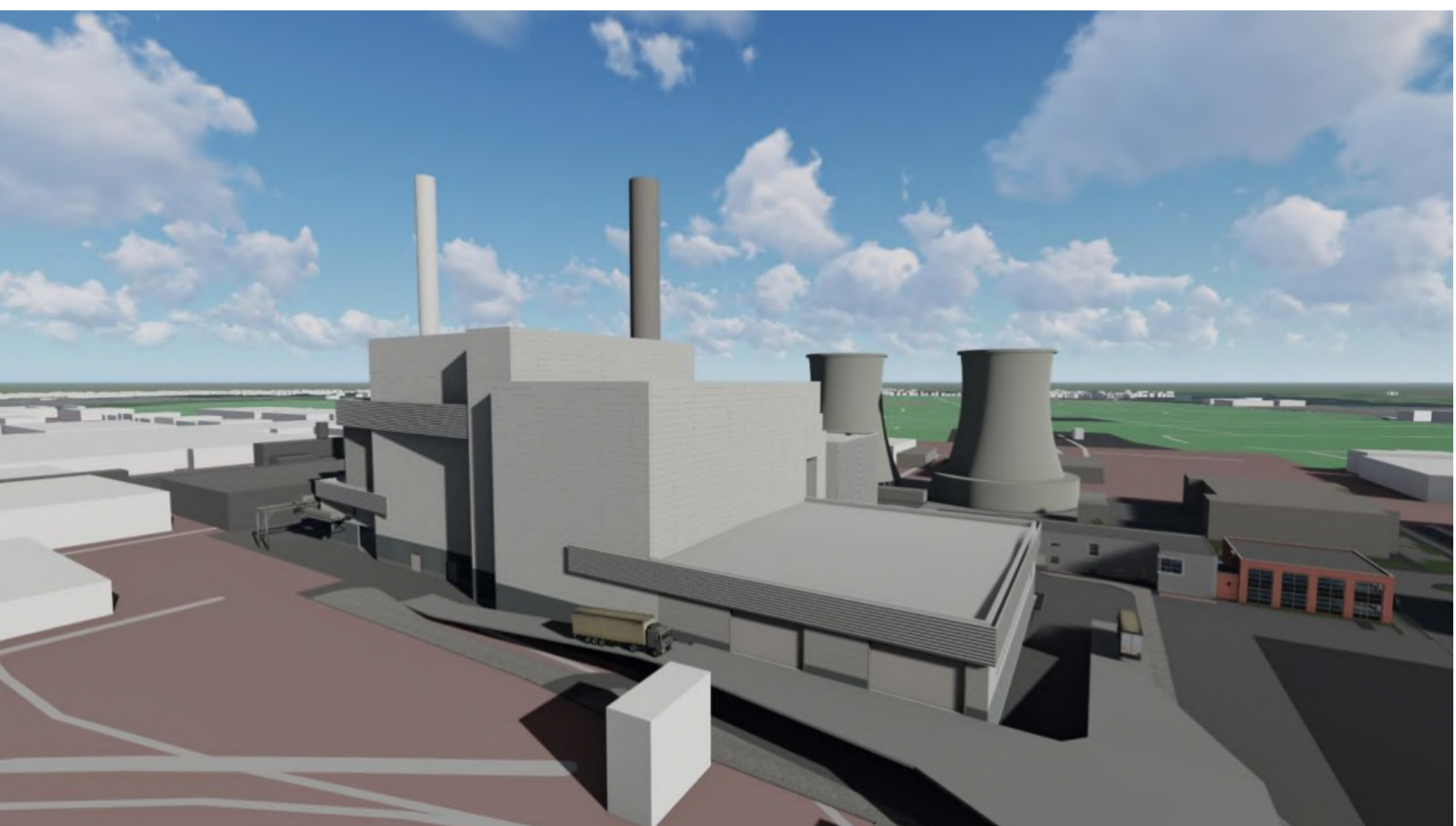


**Applicant: SSE Slough Multifuel Limited**

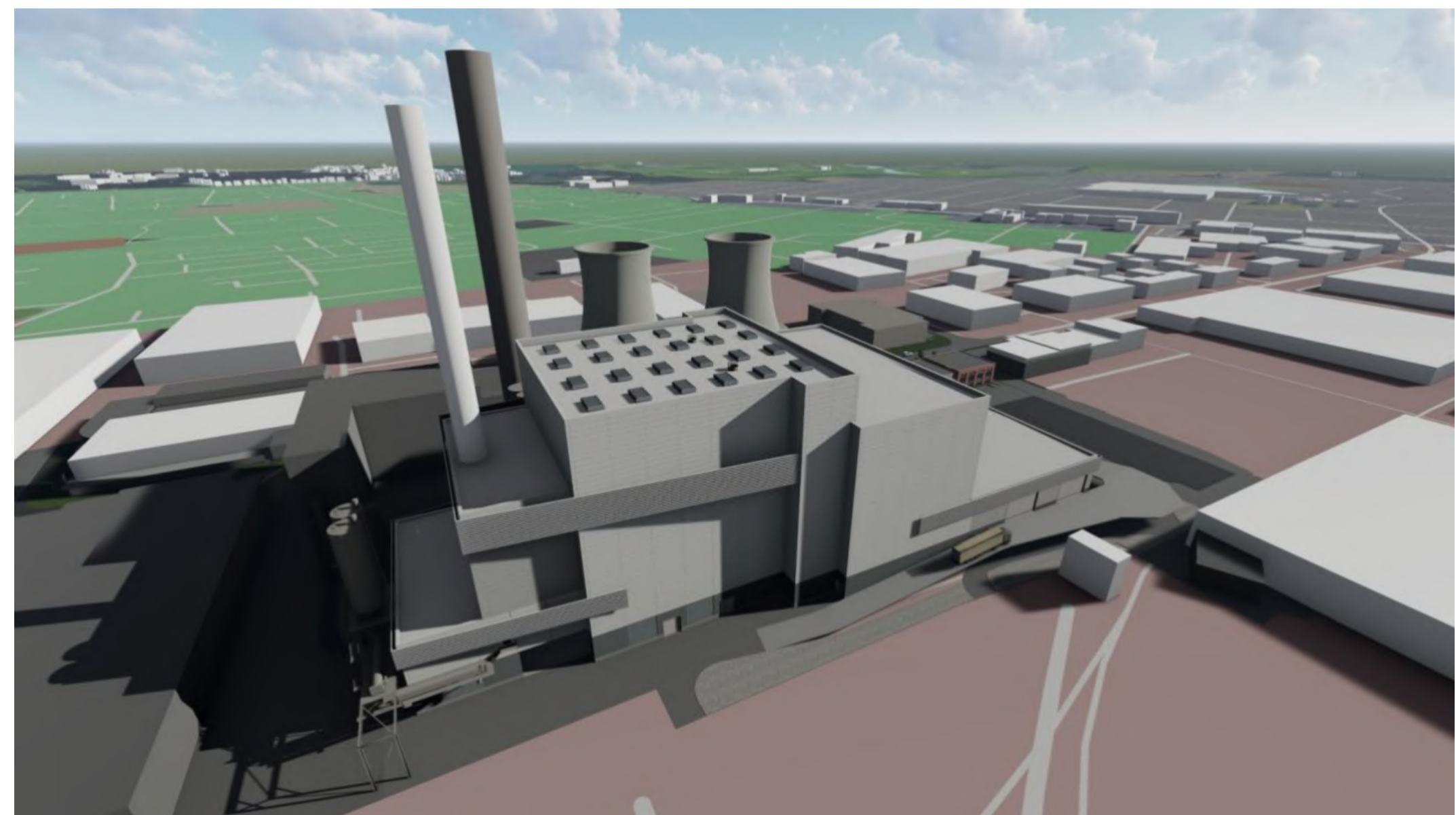
May 2023 – Deadline 5



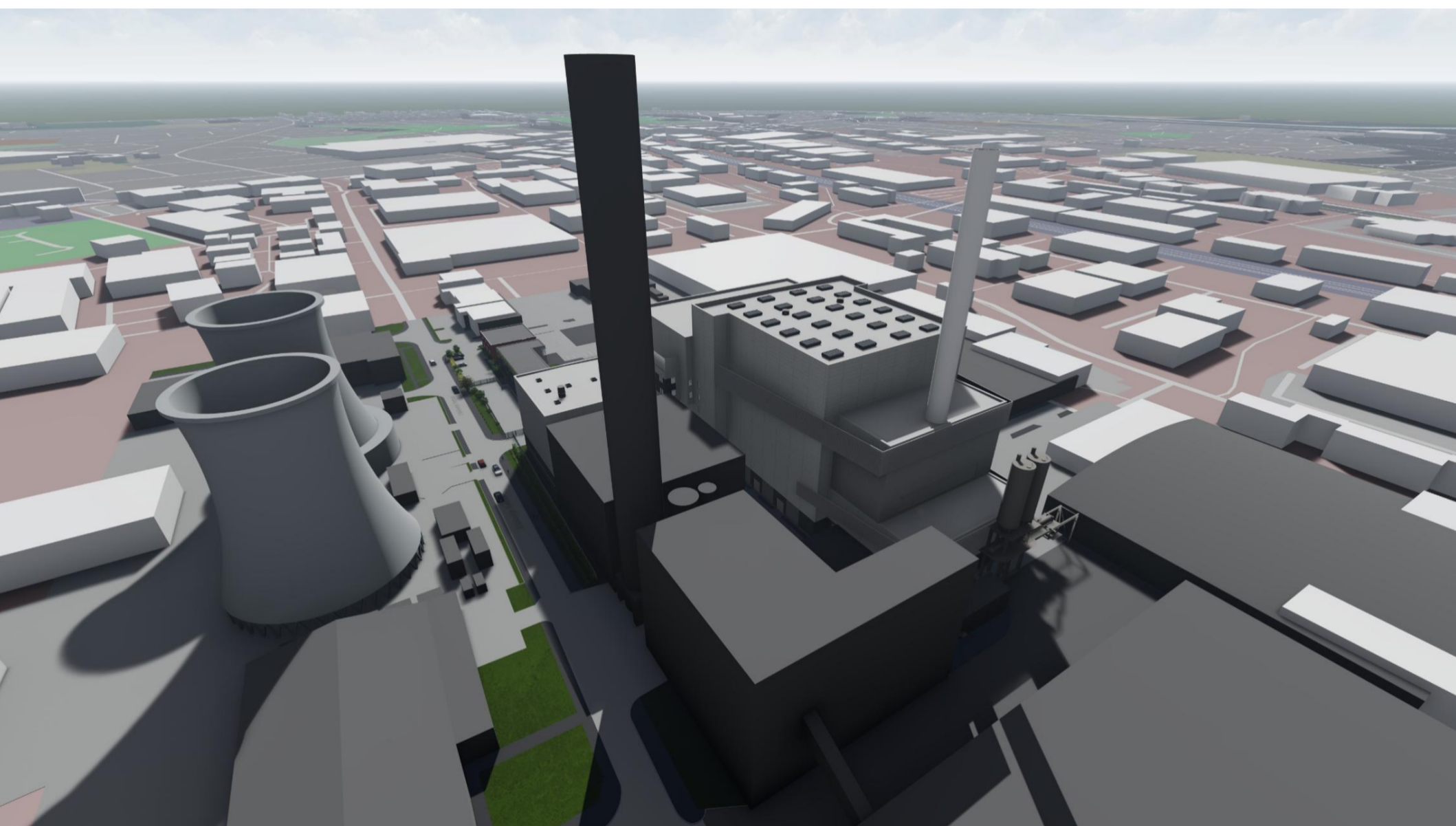
**View from North East**



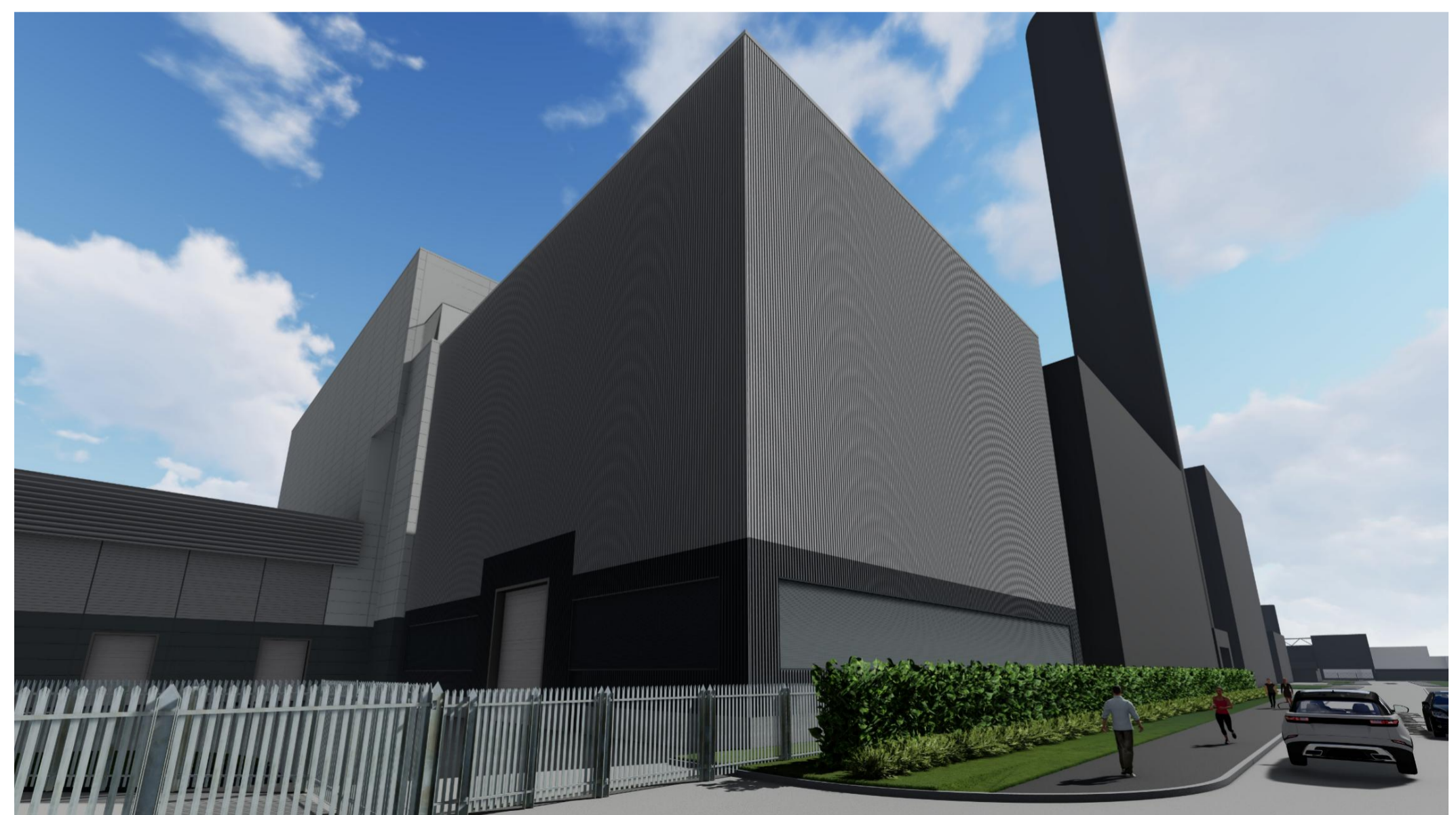
**View from South East**



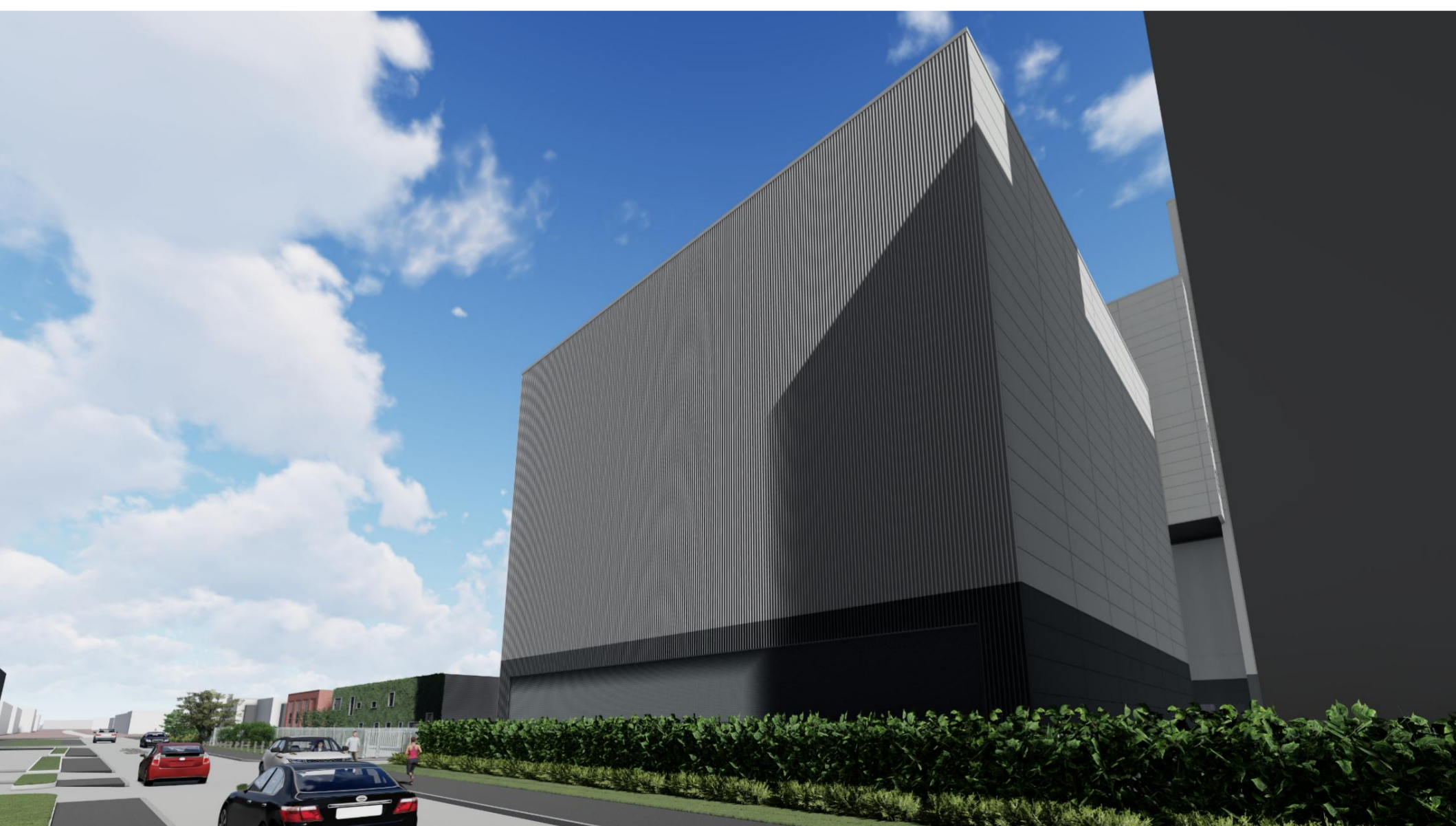
**High Level View from South West**



**High Level View from North West**



**Edinburgh Avenue View from North East**



**Edinburgh Avenue View from North West**

Copyright of this drawing is vested in the Architect and it must not be copied or reproduced without consent. Figured dimensions only are to be taken from this drawing. All contractors must visit the site and be responsible for taking and checking all dimensions relative to their work. Weedon Architects to be advised of any variation between drawings and site conditions. Refer and print in colour as required. DO NOT SCALE OFF THIS DRAWING IF IN DOUBT ASK

0.000m = +32.300m (Assumed)



Discipline Architectural Job No 16136

Doc. No. FMFEL  
**VAA-WA-50080110\_0.0**  
**Architectural Visualisation**

0.0	21.11.19	AMG	JA	PJC	ISSUED FOR PLANNING	
Rev	Date	Drawn	Modified	Checked	Approved	Modification
General tolerances					Legend Part List	
DIN ISO 2768 - mK					HZI = Supplied by Hitachi Zosen AG	
DIN 1583 - 1					SP = Spare Part	
EN ISO 1392 - BF					WP = Wear Part	
EN ISO 5817					PP = Purchased Part	
Suitability S1					Reservation of rights ISO 16016	
AIC 10AAF202					Copying of this document and give it to others and the use of communication of the content thereof are forbidden, without express authority. Offenders are liable to the payment of damages. All rights are reserved in the event of the grant of a patent or the registration of a utility model or design.	
Status Planning					Hitachi Zosen Inova AG	
Scale					Hitachi Zosen Inova AG	
Size A1					Hitachi Zosen Inova AG	
Hitachi Zosen INOVA					Hitachi Zosen Inova AG	
Project-Nr P-3258			Document No. 50080110		Revision 0.0	
Replaced by:			Replaced for:		Sht: 1 / 1	